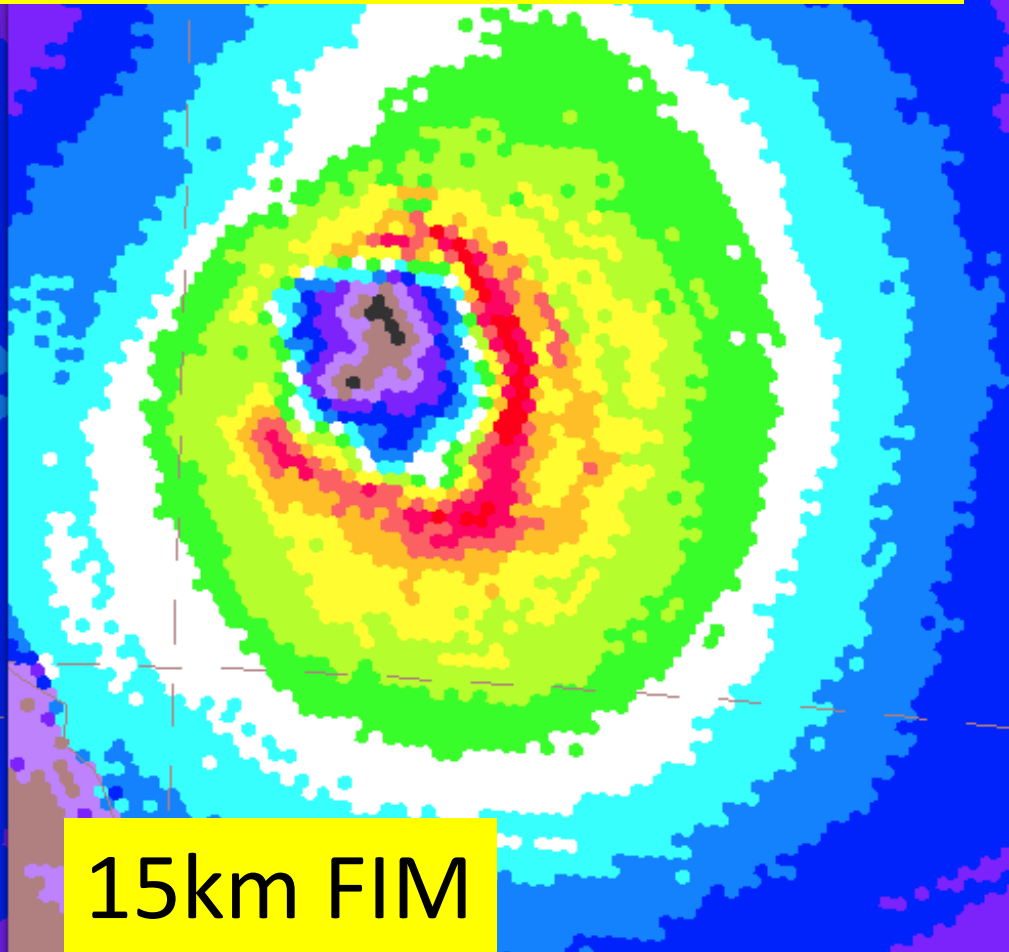
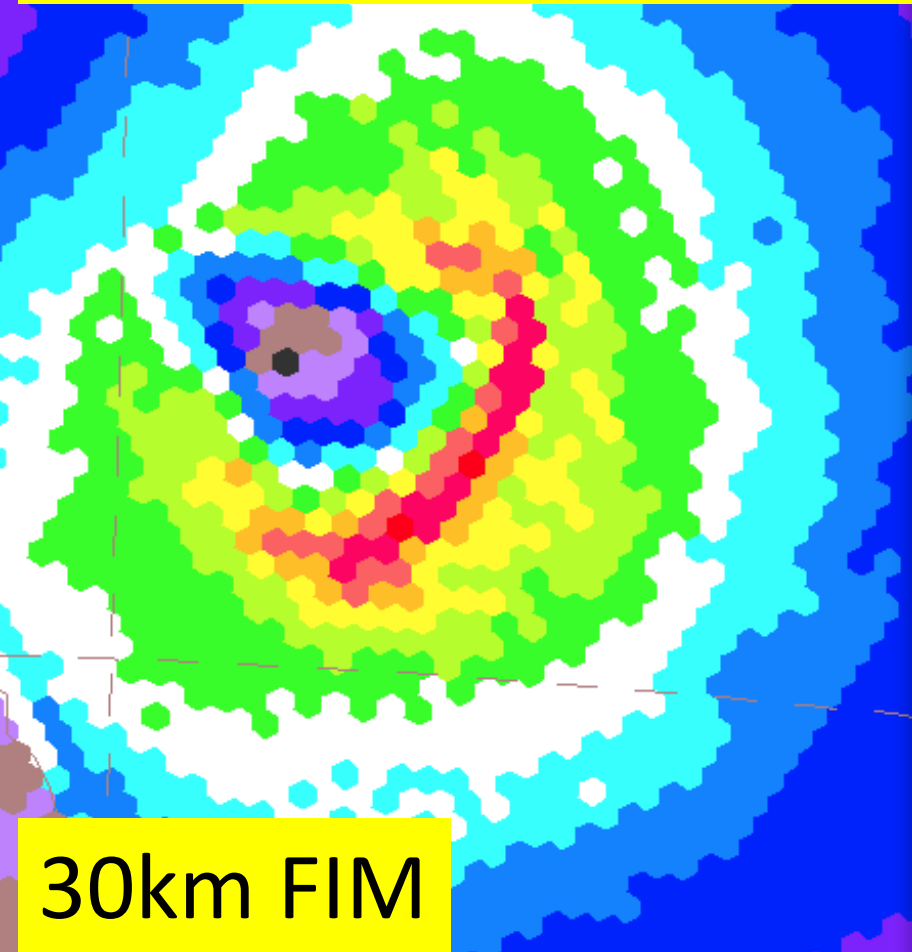


Proposed Stream 1.5 runs from ESRL for 2012

| | Resolution | Init conds | Physics for FIM | Stream 1.5 in 2011? |
|---|--|------------------------|---|---------------------|
| FIM9 | 15km | EnKF/ GSI - ESRL | GFS, possibly with Grell cumulus | FIMY 30km |
| FIM/GFS multi-model ensemble | 30- 40km/T3 84, 30-40 mem | EnKF/ GSI - ESRL | GFS physics likely with substitution of Grell cumulus | No |

- Consider LGEM intensity output for FIM/GFS ensemble

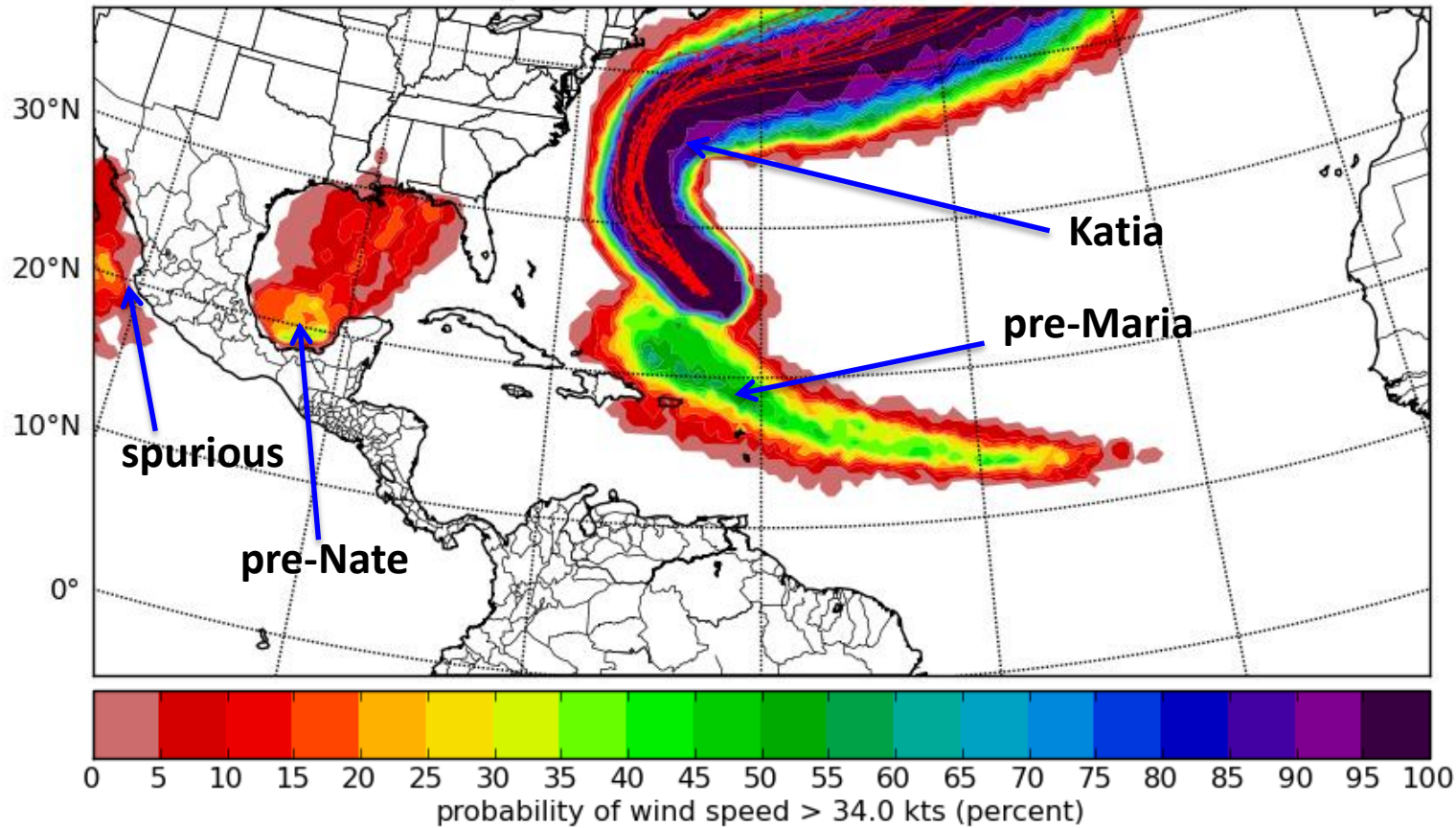
48h fcst - Cyclone Yasi -10m wind on native FIM grid



15km vs. 30km - More realistic radius of maximum winds, max wind themselves, track forecasts, coastal interaction

New GFS/EnKF Ensemble TC Wind Prob Product

EnKF Ens Tracks and Trop Storm Force Wind Prob 168 hours from 2011090600



- TS wind cumulative prob contoured (computed from 20 GFS members).
- Tracks for storms (not invests) present at initial time shown as red lines.
- Prob “swaths” not associated with tracks are new storms (**TC genesis**).
- Will be verifying probabilities for tracked and untracked (genesis) probs separately.

Track ellipse products

FIM-G7 ensembles and ellipses, IC=2011102300
for storm number 96 in the AL basin

